

**SCENIC
HUDSON**

land ■ parks ■ advocacy

CONSERVING NYC'S REGIONAL FOODSHED: Presentation to Philadelphia Society for Promoting Agriculture

Conserving the Farms that Supply the Our Farm Markets, Groceries, Schools and Restaurants

- ▶ New York City could access 30% of its food from within 100 miles
—Zumkehr and Campbell, U.C. Merced, 2015



**SCENIC
HUDSON**

land ■ parks ■ advocacy



...and Creating a More Resilient Region

- ▶ water resources
- ▶ wildlife habitat
- ▶ prime soils
- ▶ reduced NYC “foodprint”
- ▶ complements NYC’s watershed protection program



“I want a Hunt’s Point Market that’s reoriented over time to produce from our broader tri-state area as part of an overall effort to wean us off a culture that gets its food from 3,000 miles away.”


—Mayor Bill de Blasio



land ■ parks ■ advocacy

THE TIME IS RIGHT: New Yorkers Are Demanding More Fresh, Local Food


- ▶ \$866 million+/year unmet demand
- ▶ public schools need healthier food
- ▶ under-resourced communities deserve access
- ▶ drives culinary culture/economy
- ▶ diversification builds resiliency



SCENIC
HUDSON
land ■ parks ■ advocacy

Local Food Pathways

HOW HUDSON VALLEY FOOD REACHES NEW YORK CITY NEIGHBORHOODS



Local food reaches New York City in many ways. Urban farms and gardens provide some fresh produce, but the majority of local food comes to New Yorkers from nearby farms. NYC's farmers markets and farm-to-table restaurants are a familiar sight, and local food is increasingly acquired through Community Supported Agriculture (CSA) programs, food pantries, community



CONSERVED FARMLAND: Cornerstone of a Sustainable Food System

- ▶ support local production through procurement
- ▶ invest in food distribution infrastructure
- ▶ CONSERVE REGIONAL FOODSHED



land ■ parks ■ advocacy

Elements of a Sustainable Regional Food System



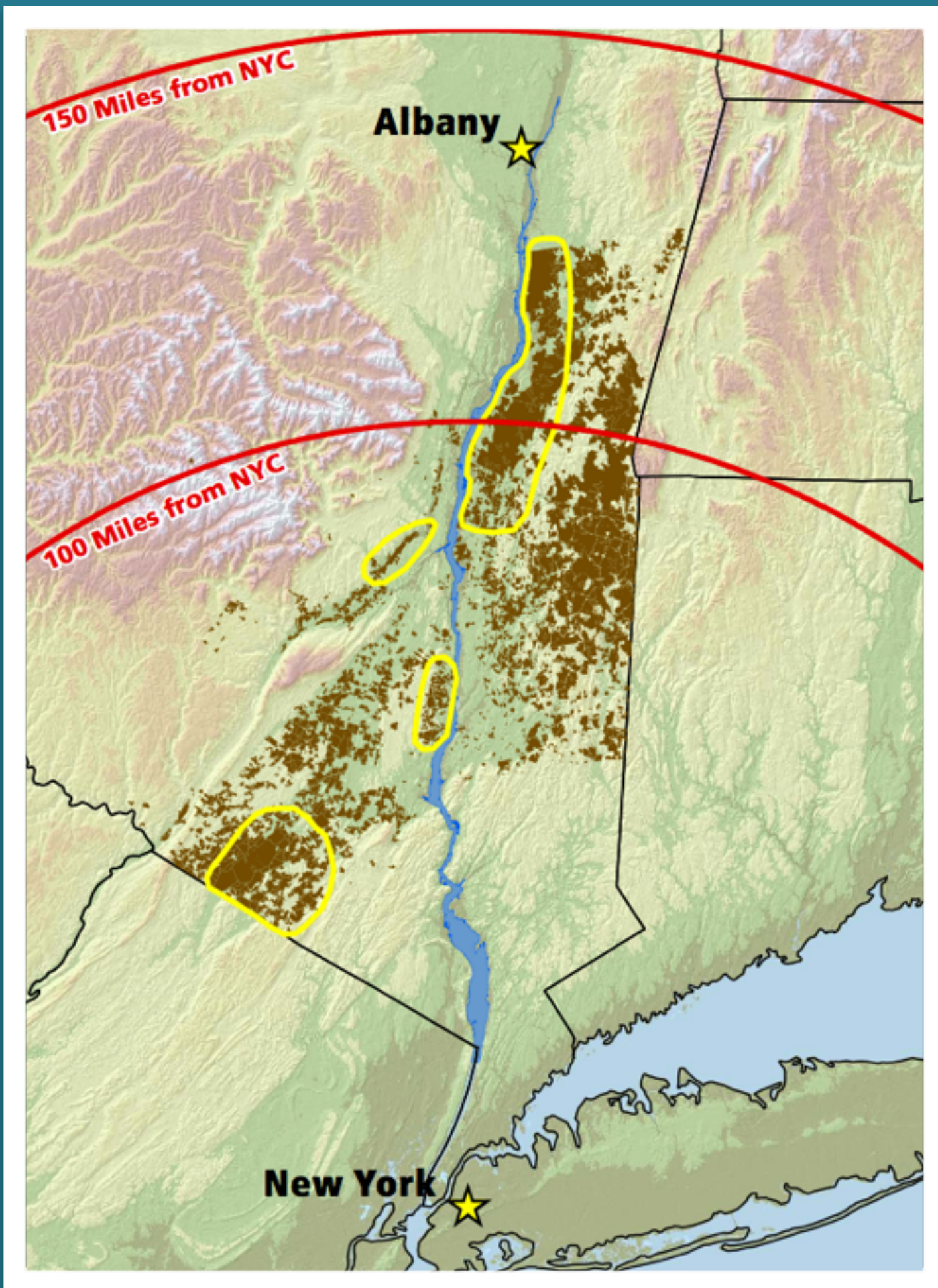
SCENIC HUDSON'S ROLE: 17 Year Track Record

- ▶ 14,000 acres on 100 farms in 5 counties
- ▶ \$40M+ delivered to farmers
- ▶ \$16M+ leveraged
- ▶ \$2M+ annual SH investment
- ▶ partners with 6 land trusts
- ▶ “critical mass” builds resilient regional farm economy



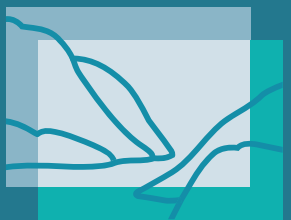
**SCENIC
HUDSON**

land ■ parks ■ advocacy



PURCHASE OF DEVELOPMENT RIGHTS: Potent Tool to Strengthen Economic Viability

- ▶ more affordable land access
- ▶ increased supply & productivity
- ▶ facilitates family transition
- ▶ builds economic stability
- ▶ enables farm expansion



**SCENIC
HUDSON**

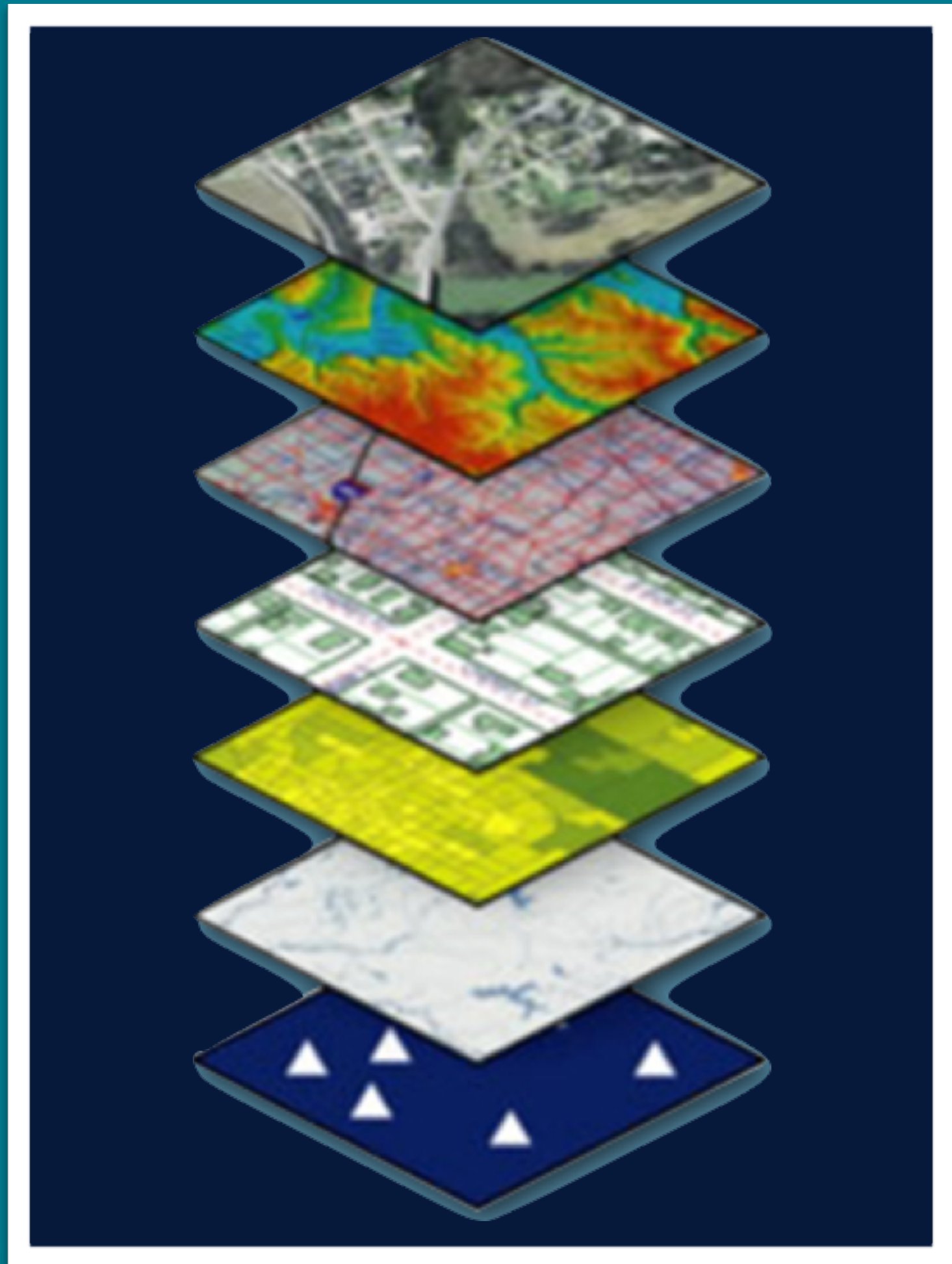
land ■ parks ■ advocacy

TOOLS & TECHNIQUES: GIS Modeling for Farmland Protection

1. Define Parcels of Interest
2. Prioritize Individual Farms
3. Identify Regional Priorities



land ■ parks ■ advocacy



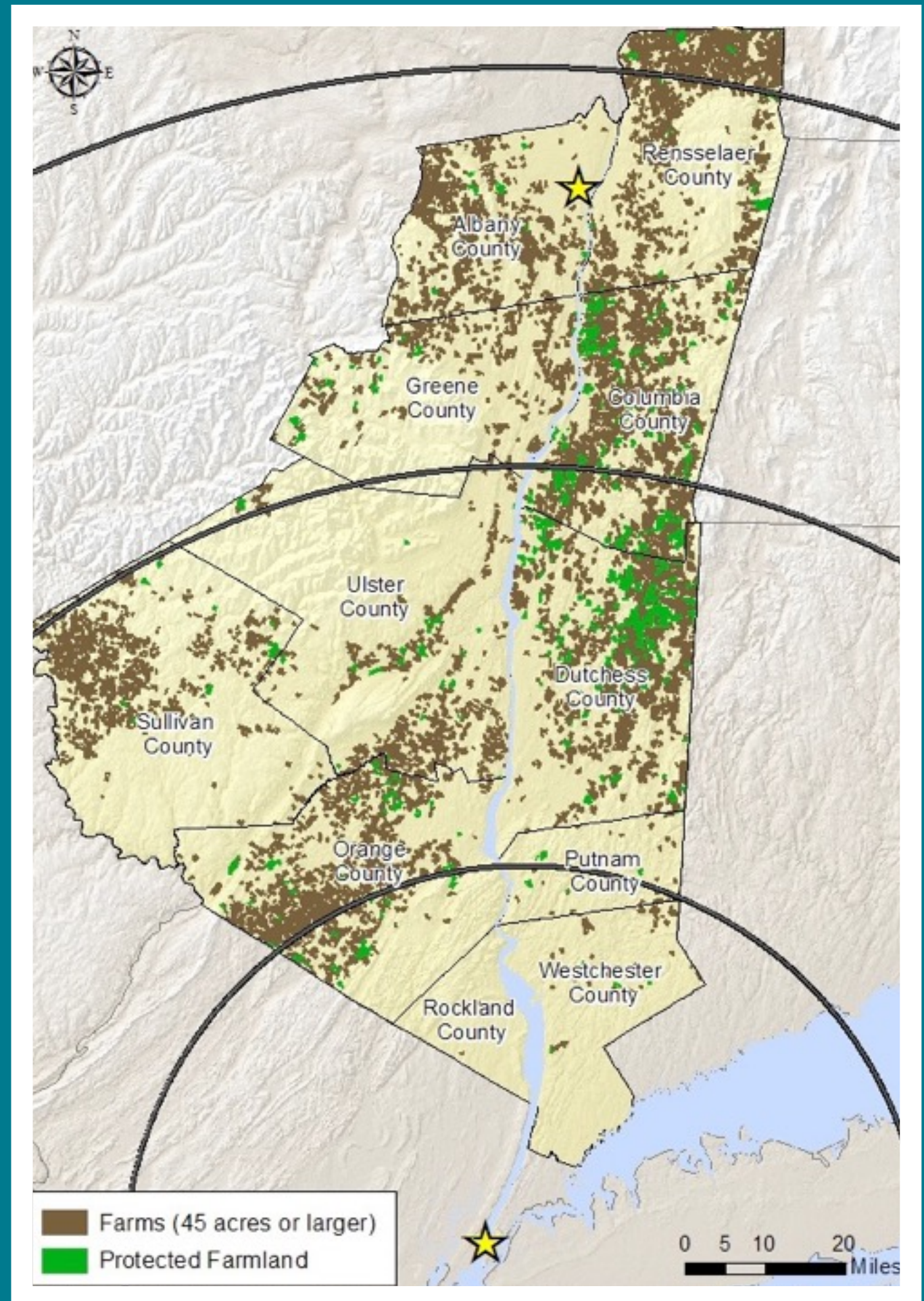
DEFINING PARCELS OF INTEREST

1. establish focus area
2. identify possible farms
 - agricultural districts + agricultural use + agricultural exemptions
3. verify total farms
 - 5,837 farms, 730,289 acres
4. subtract protected farmland to define farms of interest
 - 4,969 farms, 648,959 acres



**SCENIC
HUDSON**

land ■ parks ■ advocacy



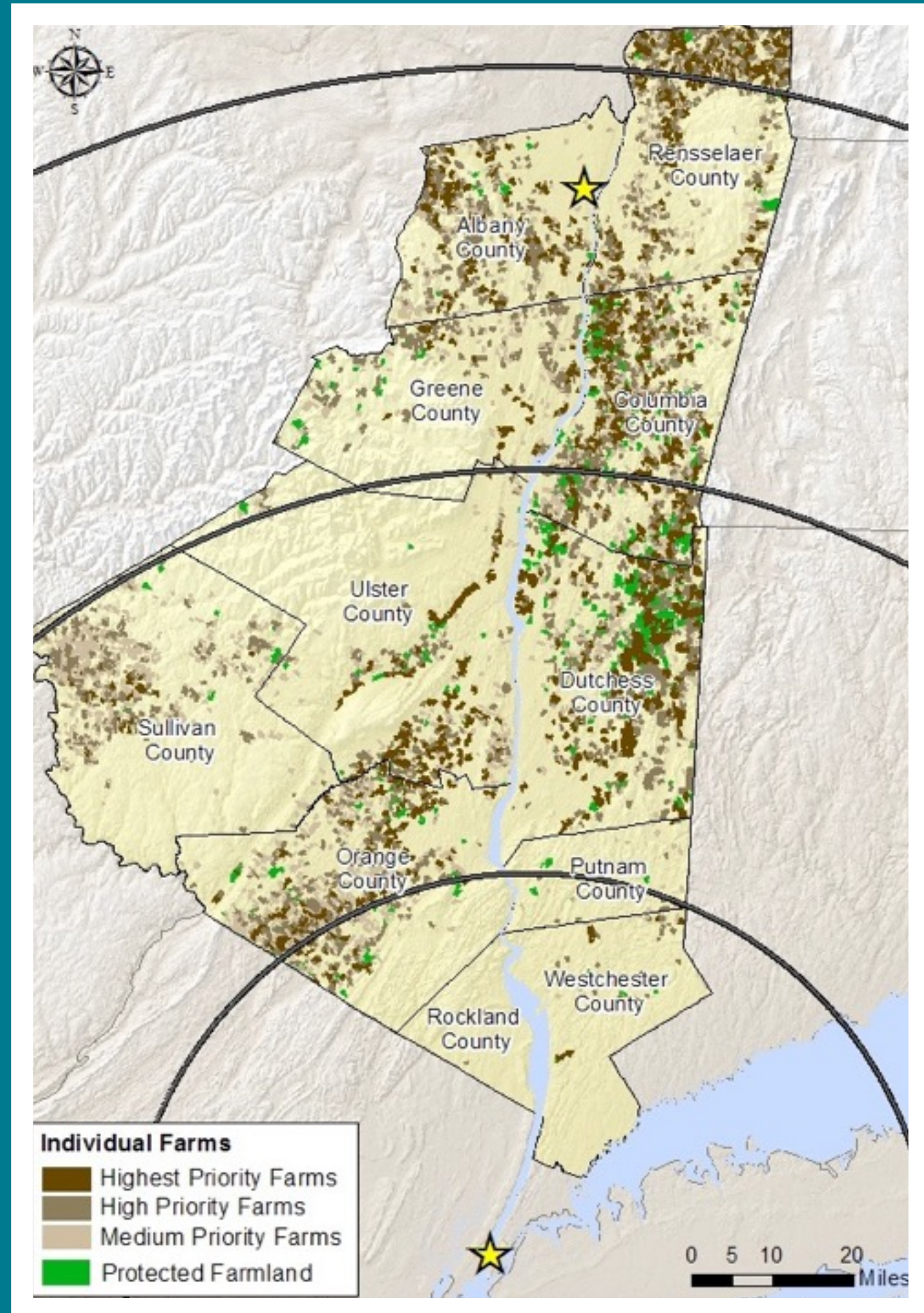
PRIORITIZING INDIVIDUAL FARMS

1. assign "soil value" for each farm based on mean capacity
2. assign "size value" for each farm based on arable acreage
 - 45-100 acres
 - 101-200 acres
 - 200+ acres
3. establish "combined priority" value for each farm (67% soil; 33% size)



**SCENIC
HUDSON**

land ■ parks ■ advocacy



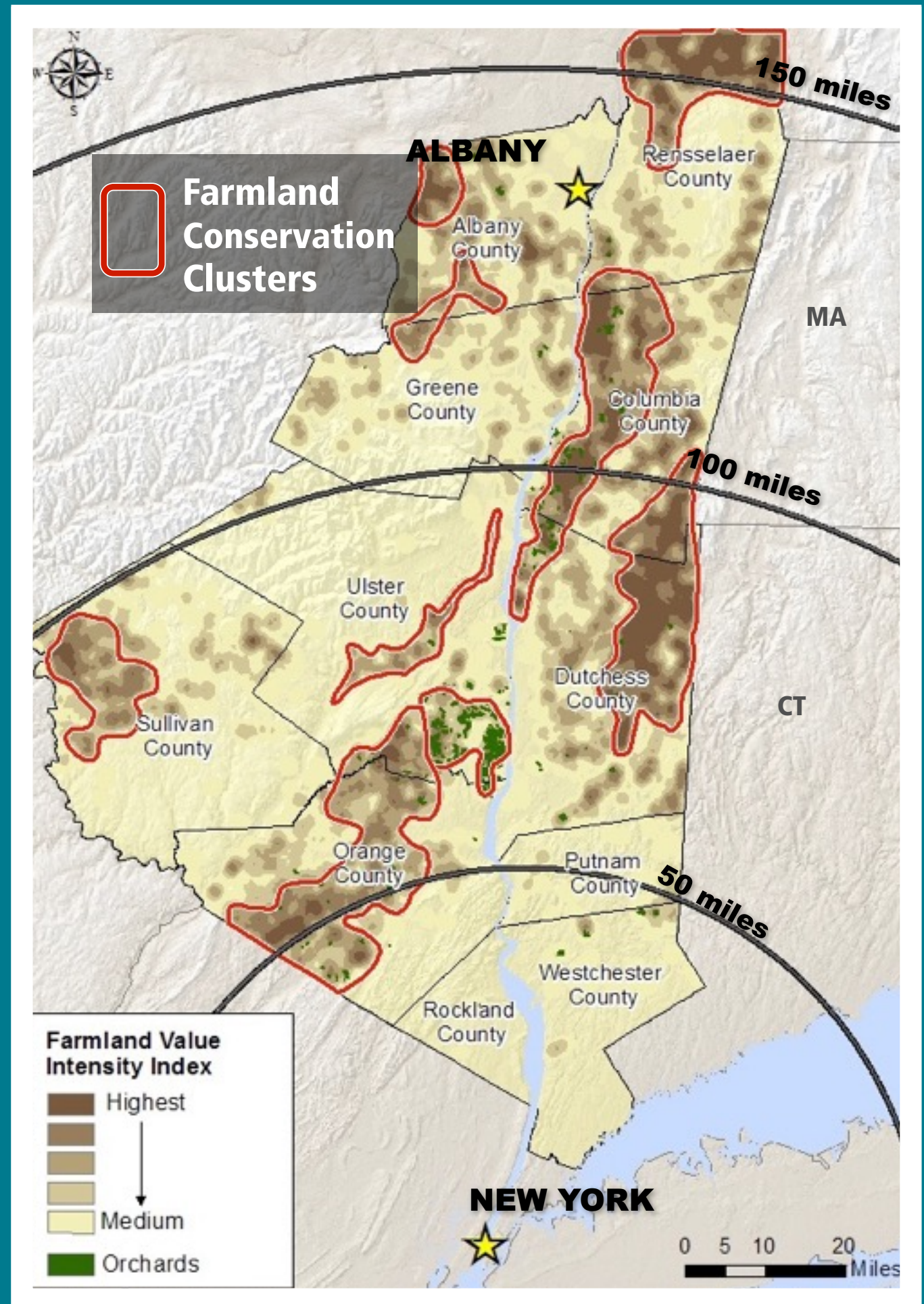
IDENTIFYING REGIONAL PRIORITIES

1. soil capacity per town
2. farm size per town
3. farmland density per town
4. "farmland intensity index" per town
5. average farmland intensity (plus orchards)
6. priority "farmland conservation clusters"



**SCENIC
HUDSON**

land ■ parks ■ advocacy



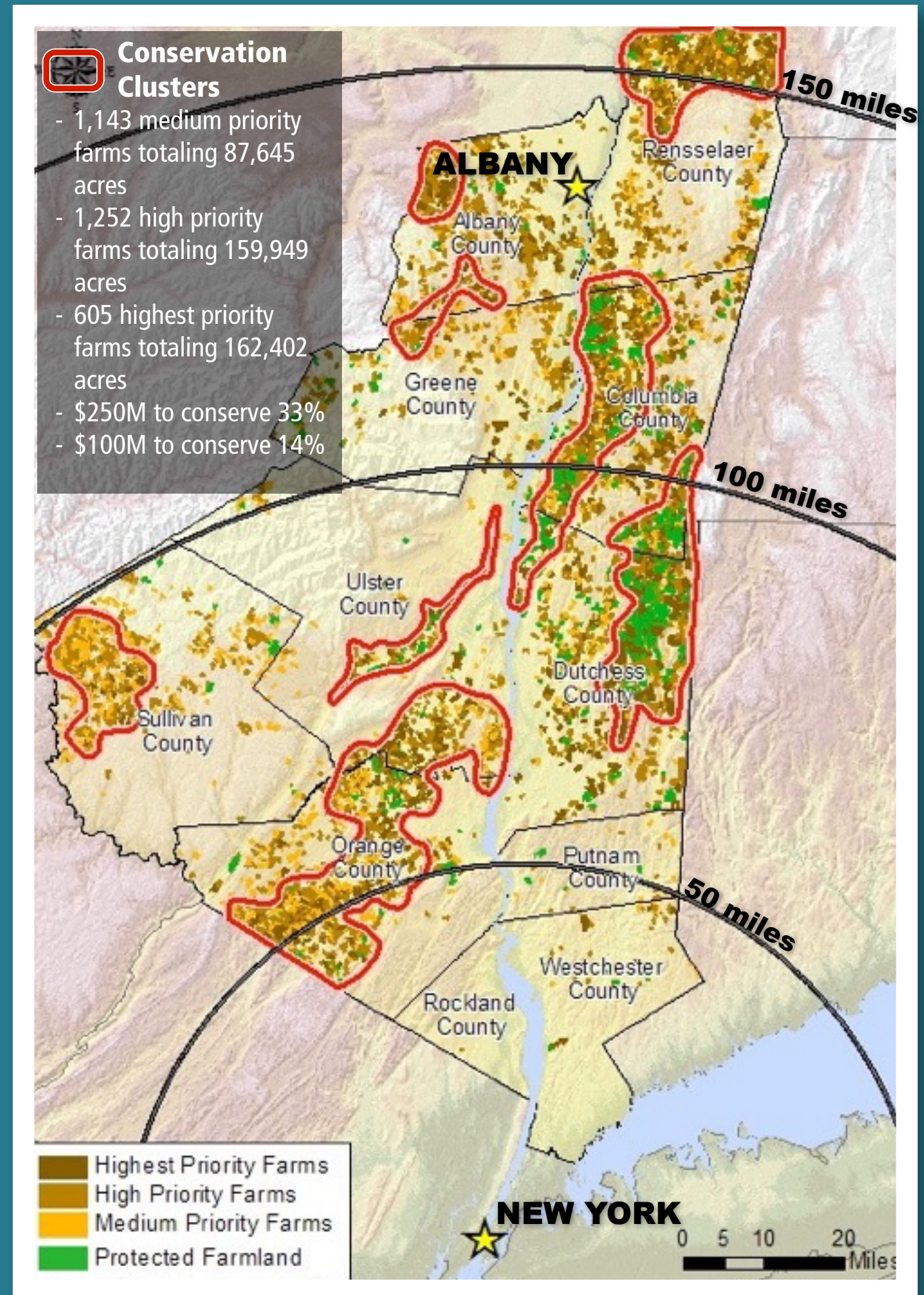
STRATEGIC PLAN TO CONSERVE THE FOODSHED

- ▶ foodshed plan offers strategic framework
- ▶ land trusts deliver turn-key deals
- ▶ cost reasonable
- ▶ farmers motivated



**SCENIC
HUDSON**

land ■ parks ■ advocacy



**CONCEPTUAL PRO FORMA:
\$250 million conserves 1/3
of highest priority farms
over 10 years**

CONTRIBUTION GOAL:

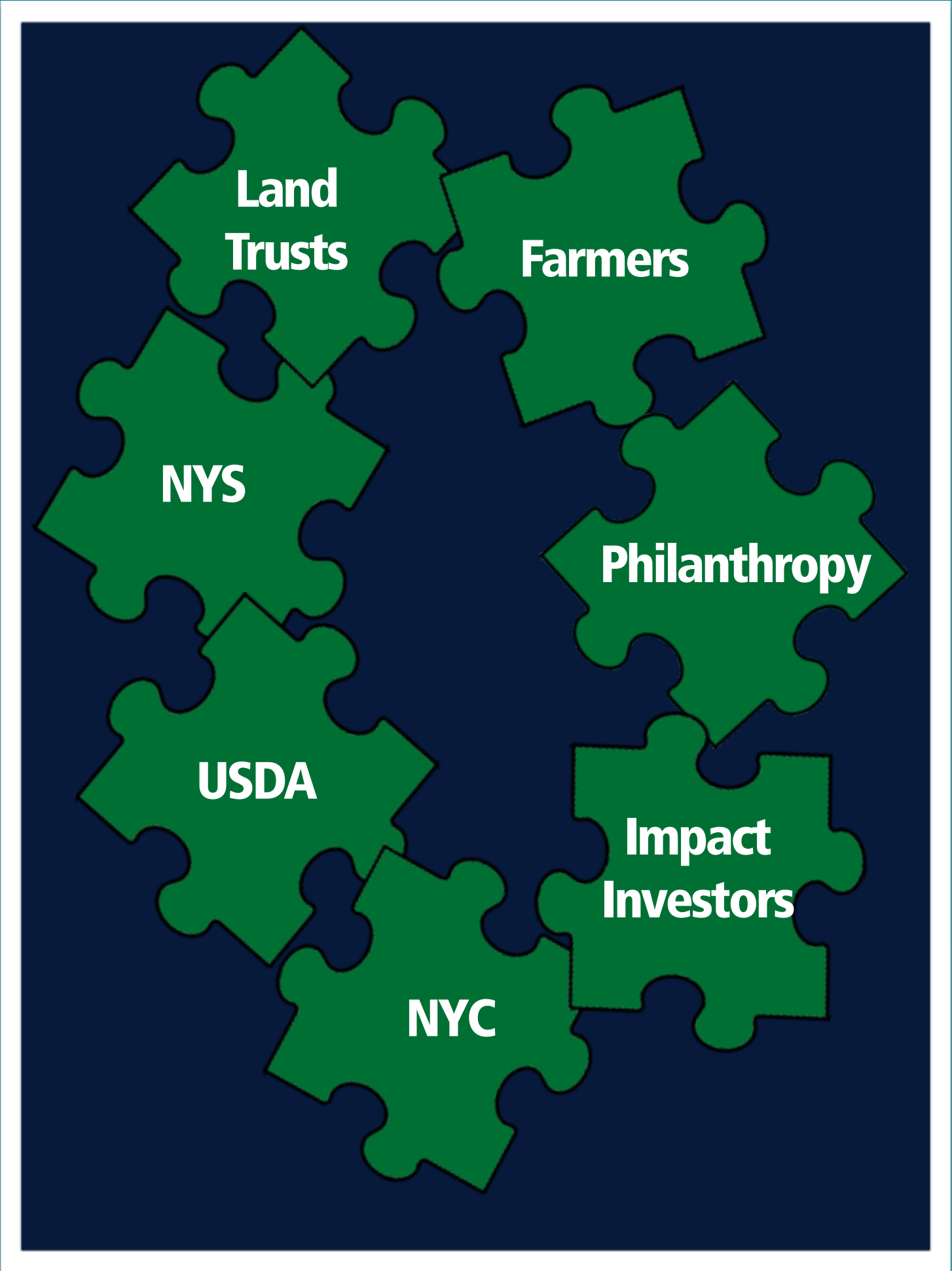
NY State	\$20M, plus \$5M/yr
USDA	\$2.5M/yr
County/Local	\$2M/yr
Scenic Hudson	\$2M/yr
Philanthropy/ Landowners	\$6.5M/yr
New York City	\$5M/yr

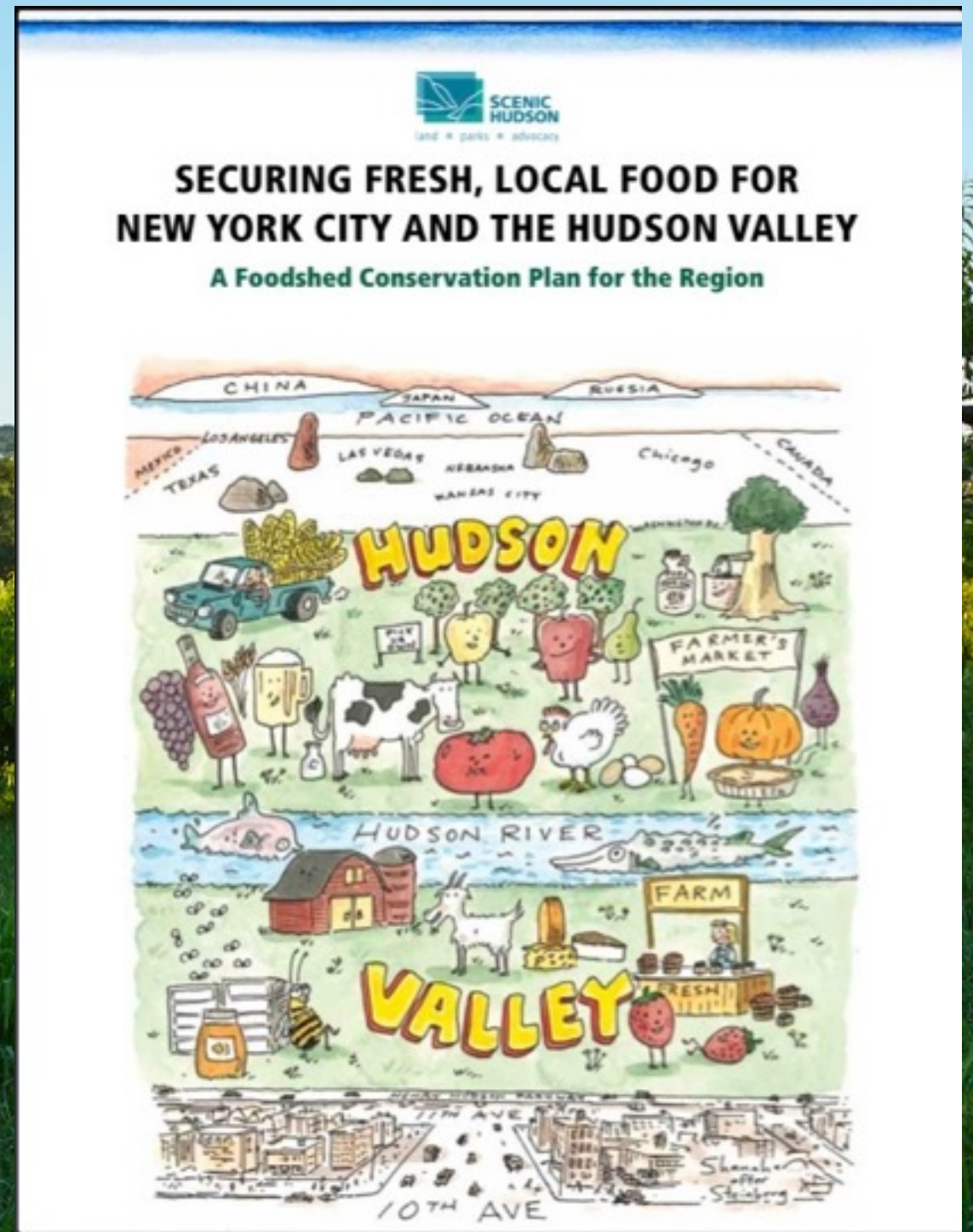
(* NYS pays 75%, USDA pays 50%)



**SCENIC
HUDSON**

land ■ parks ■ advocacy





**SCENIC
HUDSON**

land ■ parks ■ advocacy