



— Your Family Farm —



**Freddy Hill
FARMS**

MILK & HomeMade ICE CREAM

www.freddyhill.com

JOIN US ON THE
ICECREAM TRAIL!
WWW.VISITPA.COM/SCOOPS

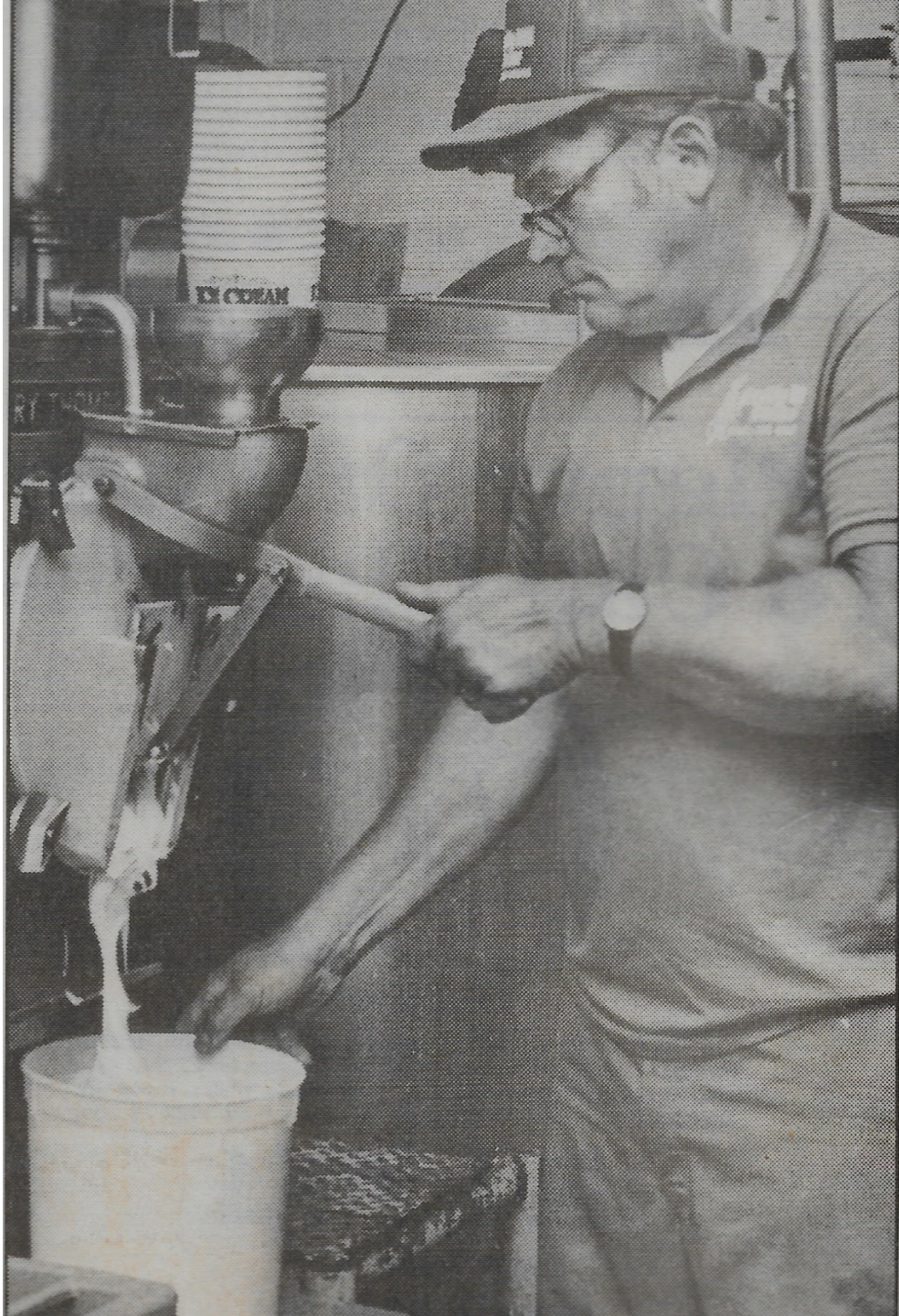
BANANA
MILK
OPEN TIL 11 PM













ICE CREAM
DRINKS

MILKSHAKE	1.50
SOFT ICE CREAM	1.00
SOFT ICE CREAM FLAVOR	1.00
SOFT ICE CREAM FLAVOR	1.00
SOFT ICE CREAM FLAVOR	1.00
SOFT ICE CREAM FLAVOR	1.00
SOFT ICE CREAM FLAVOR	1.00

FREDDY'S SUPER
SUNDAE BAR

Small text below the sign: "We serve up happiness, one sundae at a time." "Hours: 11am - 11pm"





Initial vote against — then fore!

By SEAN LEBOSKY
Staff Writer

It took two tries, but miniature golf scored a hole-in-one Wednesday for Freddy Hill Farm.

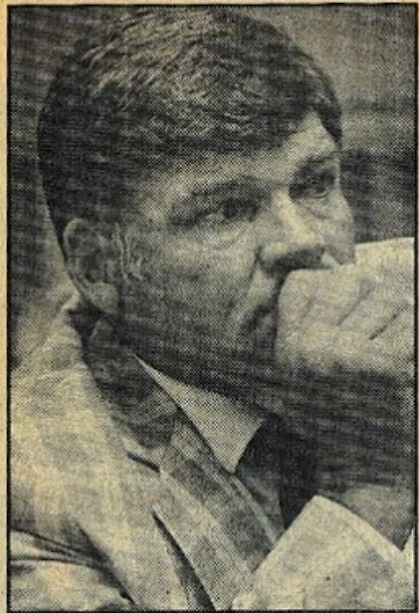
The Towamencin supervisors voted 3-2 against a zoning change to allow miniature golf at Freddy Hill Farm on Sumneytown Pike, but 10 minutes after the vote, supervisor Charles J. O'Reilly changed his vote and the proposed recreation complex was out of the rough.

"When the first vote called for a 'yea' or 'nay,' you'll recall that I hesitated and said 'nay,' " O'Reilly said after the meeting.

"Right after I said 'nay,' I started to think, 'Did I do the right thing for the community?' "

O'Reilly said he started to think about the community support for the golf course. He decided his own concerns about increased traffic on Sumneytown Pike could be worked out.

"I must admit, the majority of people who I had contact with on this issue overwhelmingly favored it," O'Reilly said.



FRED SEIPT ...

Concern at initial 'no' vote

Voting in favor of the zoning change were Michael J. Becker and Robert N. Rau Jr. Julie E. Geiger and Lillian C. Smith voted against the change.

More than 50 people attended Wednesday's meeting to witness the crucial vote after months of debate. Opinion was sharply divided on whether Freddy Hill Farm's owner, Fred Seipt, should be allowed to turn 35 acres of farmland into a recreation com-

Please see GOLF on Page A18►



KEN ZEPP/THE REPORTER

FRED SEIPT later celebrates with granddaughter Laura Wednesday after a Towamencin supervisor reversed his decision, giving approval for the miniature golf course.







Freddy's

Family Fun Center

- **DRIVING RANGE**
- **GOLF PRO SHOP**
- **MINIATURE GOLF**
- **BATTING CAGES**

www.freddyhill.com









WARNING!!
FOR YOUR SAFETY - PLEASE
READ BEFORE BATTING...
Customers assume the risk of
using these Batting Cages. If you
have any questions ask the attendant
before entering the Cages.

INSTRUCTIONS

- 1. BEFORE HITTING THE BALLS IN THE CAGE, ALL CUSTOMERS
MUST WEAR PROTECTIVE GEAR AND BE PROPERLY
INSTRUCTED BY THE ATTENDANT.
- 2. CUSTOMERS ARE NOT TO BE IN THE CAGE WHEN
THE BALLS ARE BEING HIT.
- 3. CUSTOMERS ARE NOT TO BE IN THE CAGE WHEN
THE BALLS ARE BEING HIT.
- 4. CUSTOMERS ARE NOT TO BE IN THE CAGE WHEN
THE BALLS ARE BEING HIT.
- 5. CUSTOMERS ARE NOT TO BE IN THE CAGE WHEN
THE BALLS ARE BEING HIT.
- 6. CUSTOMERS ARE NOT TO BE IN THE CAGE WHEN
THE BALLS ARE BEING HIT.
- 7. CUSTOMERS ARE NOT TO BE IN THE CAGE WHEN
THE BALLS ARE BEING HIT.
- 8. CUSTOMERS ARE NOT TO BE IN THE CAGE WHEN
THE BALLS ARE BEING HIT.
- 9. CUSTOMERS ARE NOT TO BE IN THE CAGE WHEN
THE BALLS ARE BEING HIT.
- 10. CUSTOMERS ARE NOT TO BE IN THE CAGE WHEN
THE BALLS ARE BEING HIT.

No Practice Balls
Outside of Cage

NO ALLEY

3
MEDIUM
BASEBALL
Bat At Own Risk
CAUTION

No Practice Balls
Outside of Cage













The Easter Story

**A Dramatic Presentation
of Christ's Final Week
on Earth** (Family Friendly)

Friday, April 19th • 8pm

**at Freddy's Family Fun Center
Sumneytown Pike ~ Lansdale**

**Presented By Members of
Central Schwenkfelder Church**

**for Additional Information:
(610) 584-4480**











Home on the range — in Towamencin

Freddy Hill brings emus and buffalo to the farm

By MATT ARCHBOLD
Staff Writer

TOWAMENCIN — Mohana Padgankar didn't have to travel far for her son and daughter to see emus and a buffalo.

The Montgomery Township resident just headed out to Freddy Hill Farms on Sumneytown Pike, Towamencin.

Bored with television and interested in seeing something new, her two children — Kimaya, 5, and Suyog, 3 — ran to the pens behind the dairy.

"This is very different from how it used to be," said Padgankar.

The children raced past the commonplace cows and donkeys to the emus.





















HOSTETLER
FLOORS
BODIES & TRAILERS
MILROY, PA.
717-667-3921

















































MCCORMICK-DEERING

Mc
Mo

HAYDEN
4 YR. C
UNDER



NO
CLIMBING

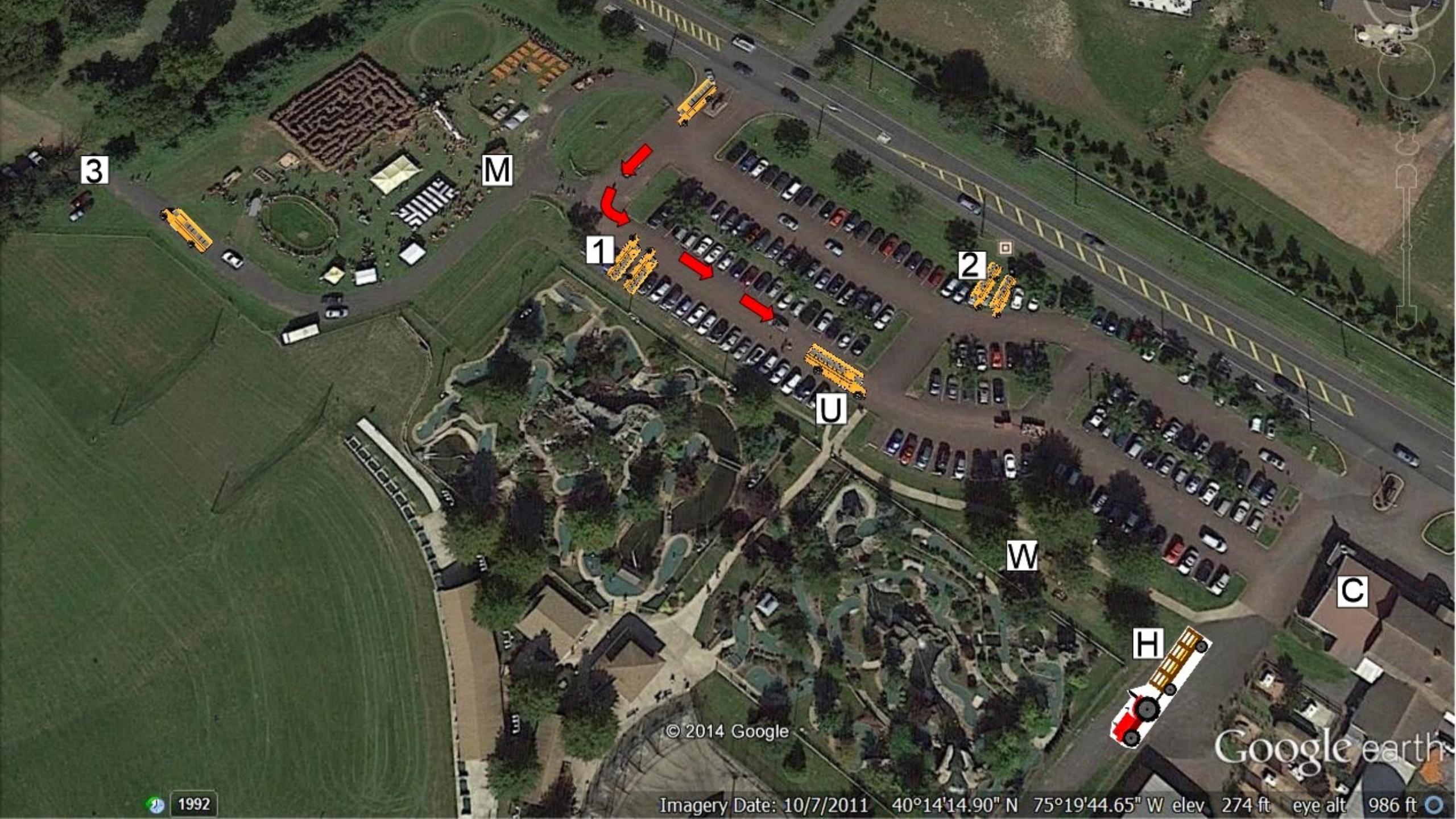
NO
CLIMBING

HAYRIDE TO
PUMPKIN PATCH

PONY
RIDE
& TICKETS







3

M

1

2

U

W

C

H

© 2014 Google

Google earth



1992

Imagery Date: 10/7/2011 40°14'14.90" N 75°19'44.65" W elev 274 ft eye alt 986 ft

