



DELAWARE VALLEY  
UNIVERSITY

# **CURRENT ISSUES IN AG ED & PREPARATION OF STUDENTS FOR CAREERS IN AG & FOOD**

**MARIA GALLO, Ph.D.  
PRESIDENT**

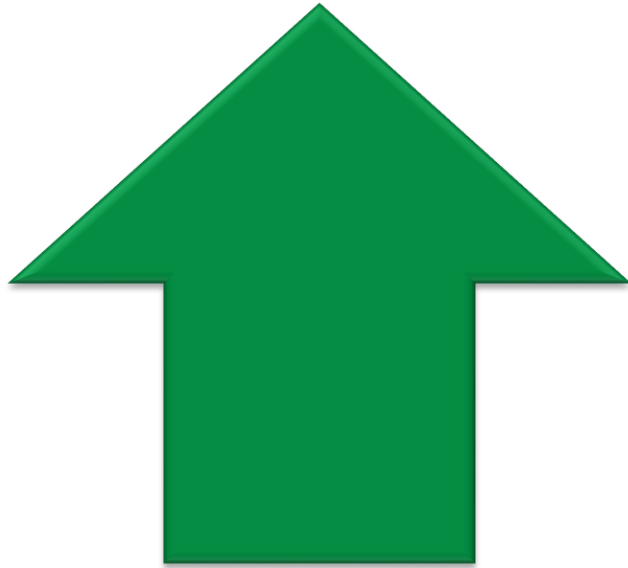
# WHERE HAVE I BEEN?



# OUTLINE

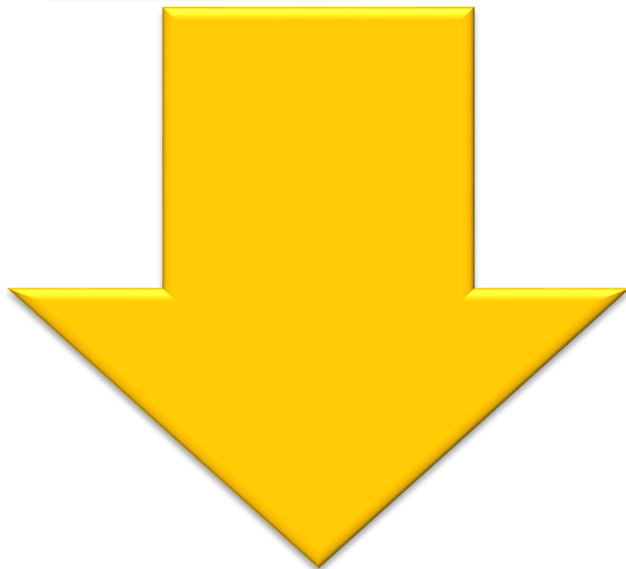
- **Awareness to Value to Influence  
Education  
Careers**
- **Public Issues Education (PIE)**
- **New Farmer Training**

# TRENDS (CHALLENGES)



## Food Demand

population size, per capita income (esp. Asia), protein consumption, inputs



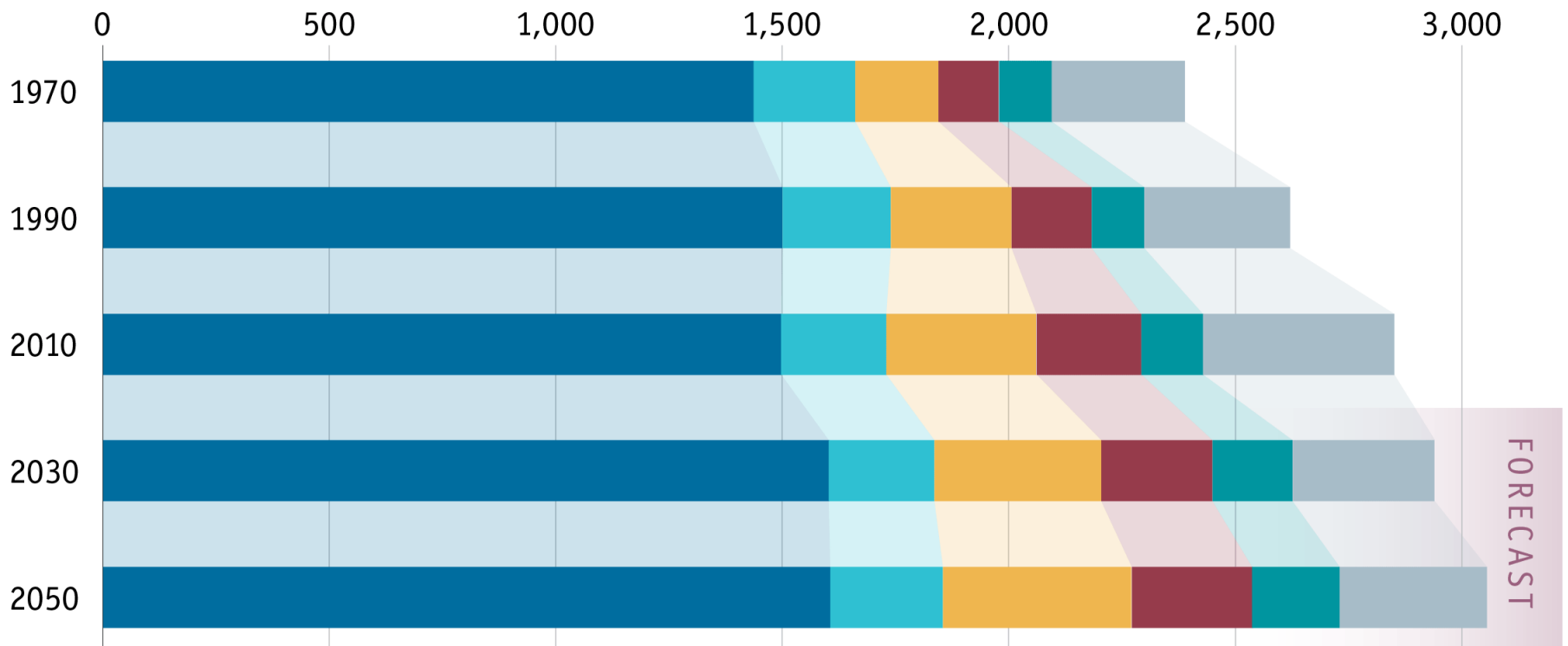
## Resource Constraints

land, water, energy costs  
scientists, farmers, funding

# What's on the world's menu

Daily calories per person by type of food

Cereals, roots and pulses   Sugar   Vegetable oils   Meat   Dairy   Other

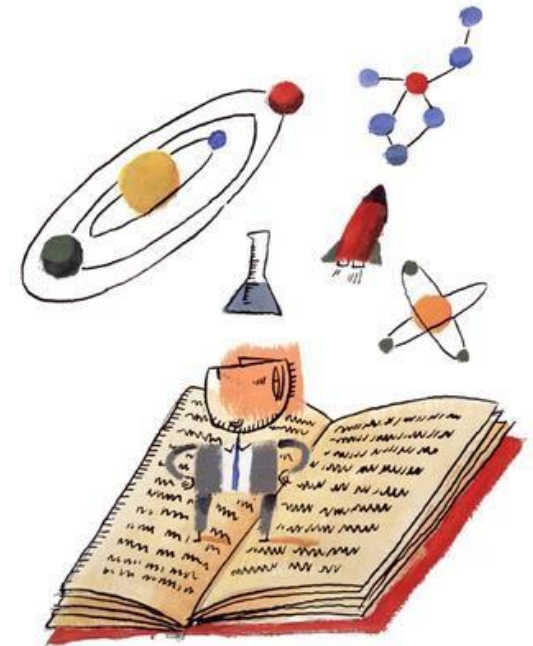


Source: FAO

# CLIMATE CHANGE

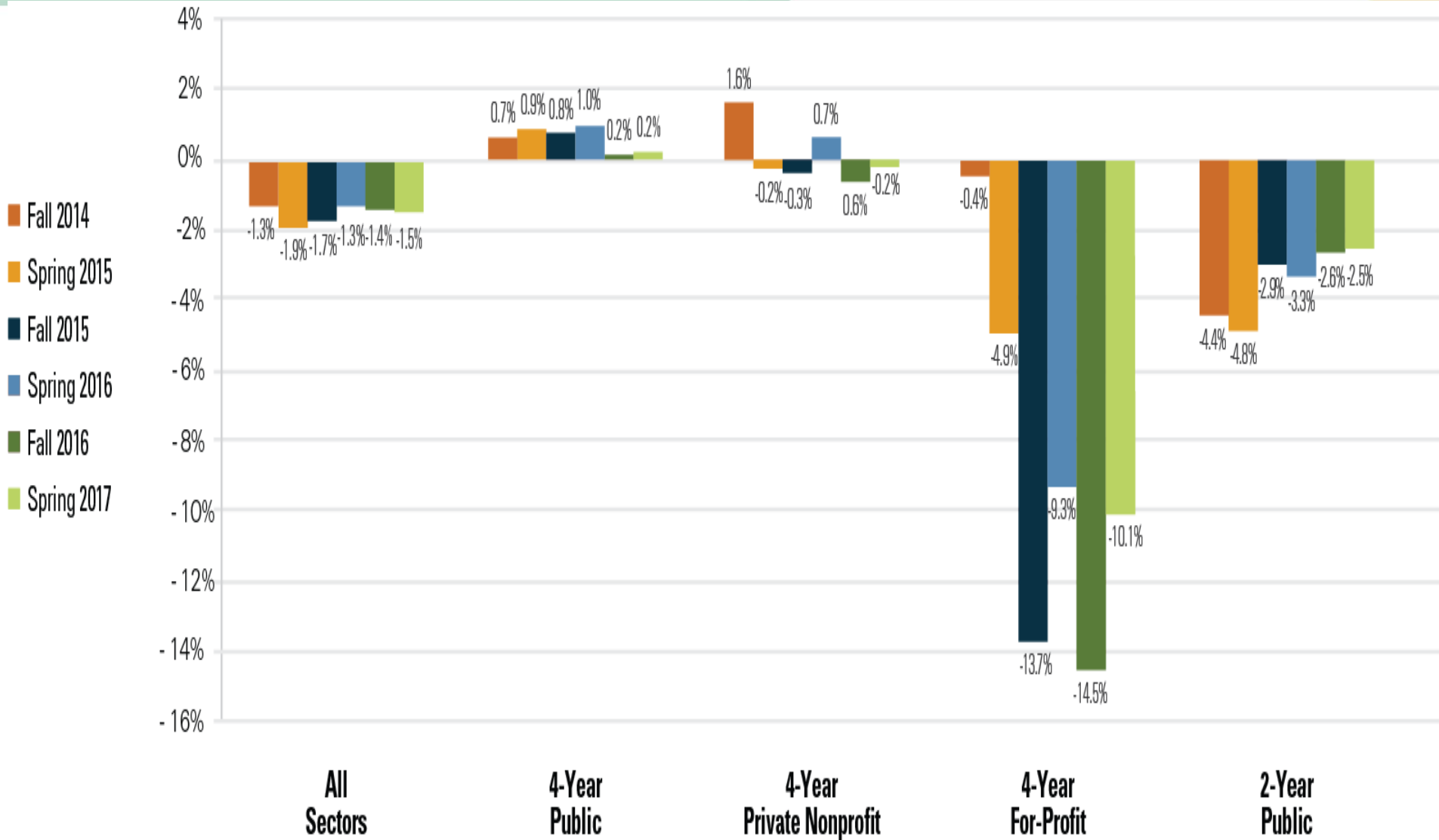


**Universities are not producing the graduates needed to meet the agriculture industry's human resource requirements over the next decade**



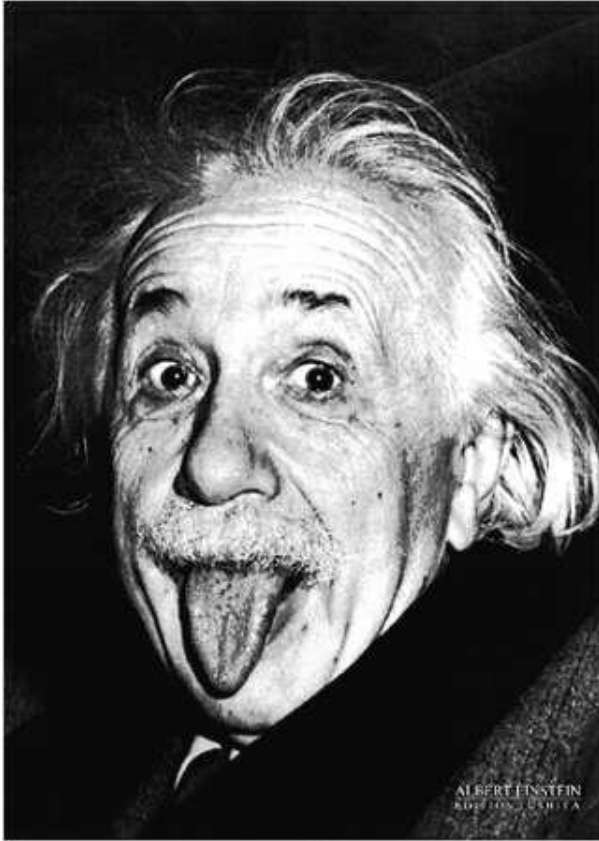


# Enrollments





**The Pew Research Center : “On virtually every measure of economic well-being and career attainment—from personal earnings to job satisfaction to the share employed full time— young college graduates are outperforming their peers with less education. And when today’s young adults are compared with previous generations, the disparity in economic outcomes between college graduates and those with a high school diploma or less formal schooling has never been greater in the modern era.”**



**The most important motive for work in school and in life is the pleasure in work, pleasure in its results, and the knowledge of the value of the result to the community.**

**Albert Einstein**  
***Ideas and Opinions***

# START WITH WHY



**FOOD**

**FEED**

**FIBER**

**FUEL**

**FUN**

# START WITH WHY



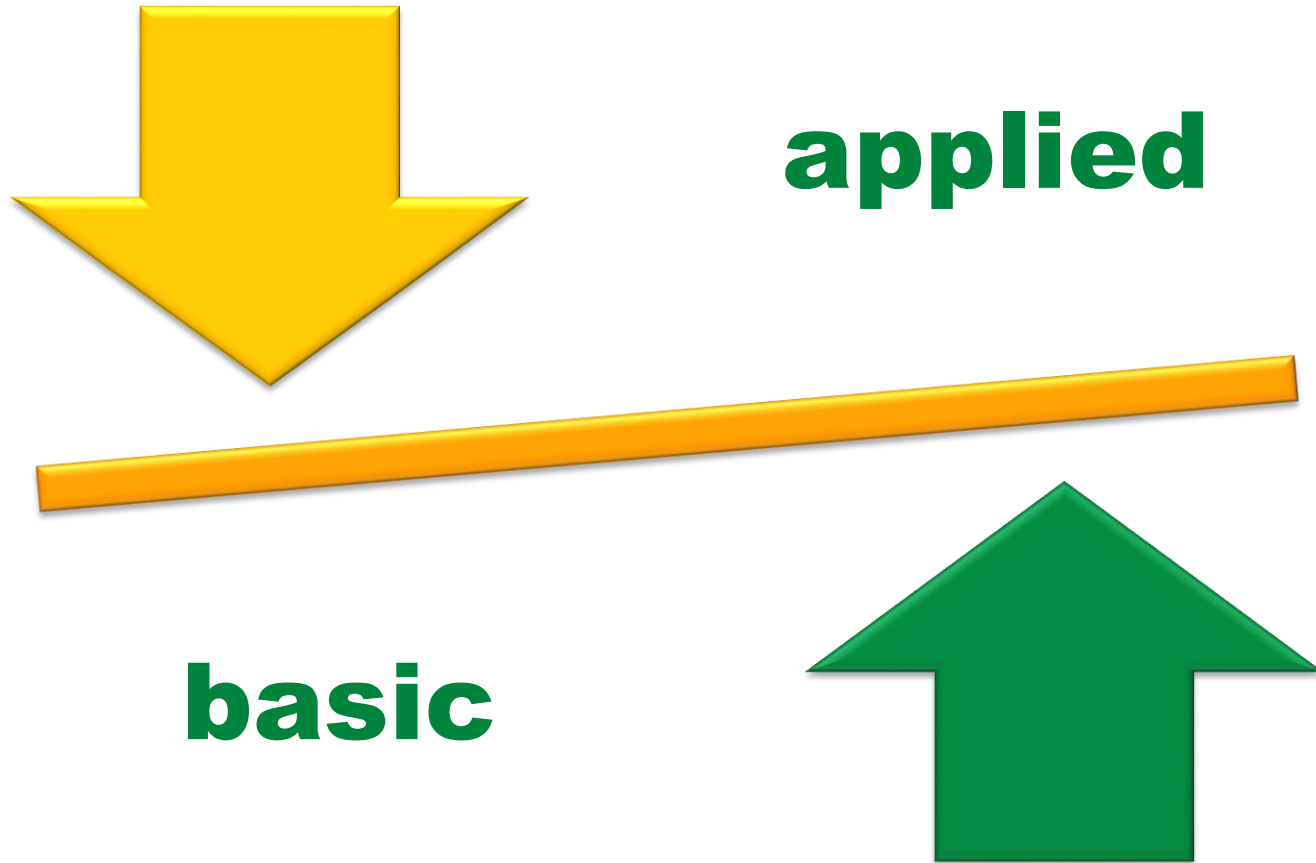


# Don't Shy Away From It, Reframe It

## A G R I C U L T U R E



# SCIENCE AND TECHNOLOGY



**A technological revolution in farming led by advances in *robotics* and sensing technologies looks set to disrupt modern practice.**

**“There is the potential for intelligent robots to change the economic model of farming so that it becomes feasible to be a small producer again,” says robotics engineer George Kantor at Carnegie Mellon University in Pittsburgh, Pennsylvania.**



## **Closing the circle on skills:**

**Applying science, technology and engineering to real-world problems**

**Developing vital business skills**

**Providing clear career pathways**

# PIE

**UF|IFAS**  
UNIVERSITY *of* FLORIDA



**Center for  
Public Issues Education**



**Public Issues Education**  
**HAWAII**

# NEW FARMER TRAINING



**“THE FUTURE AIN’T WHAT IT  
USED TO BE”**

**- YOGI BERRA**

